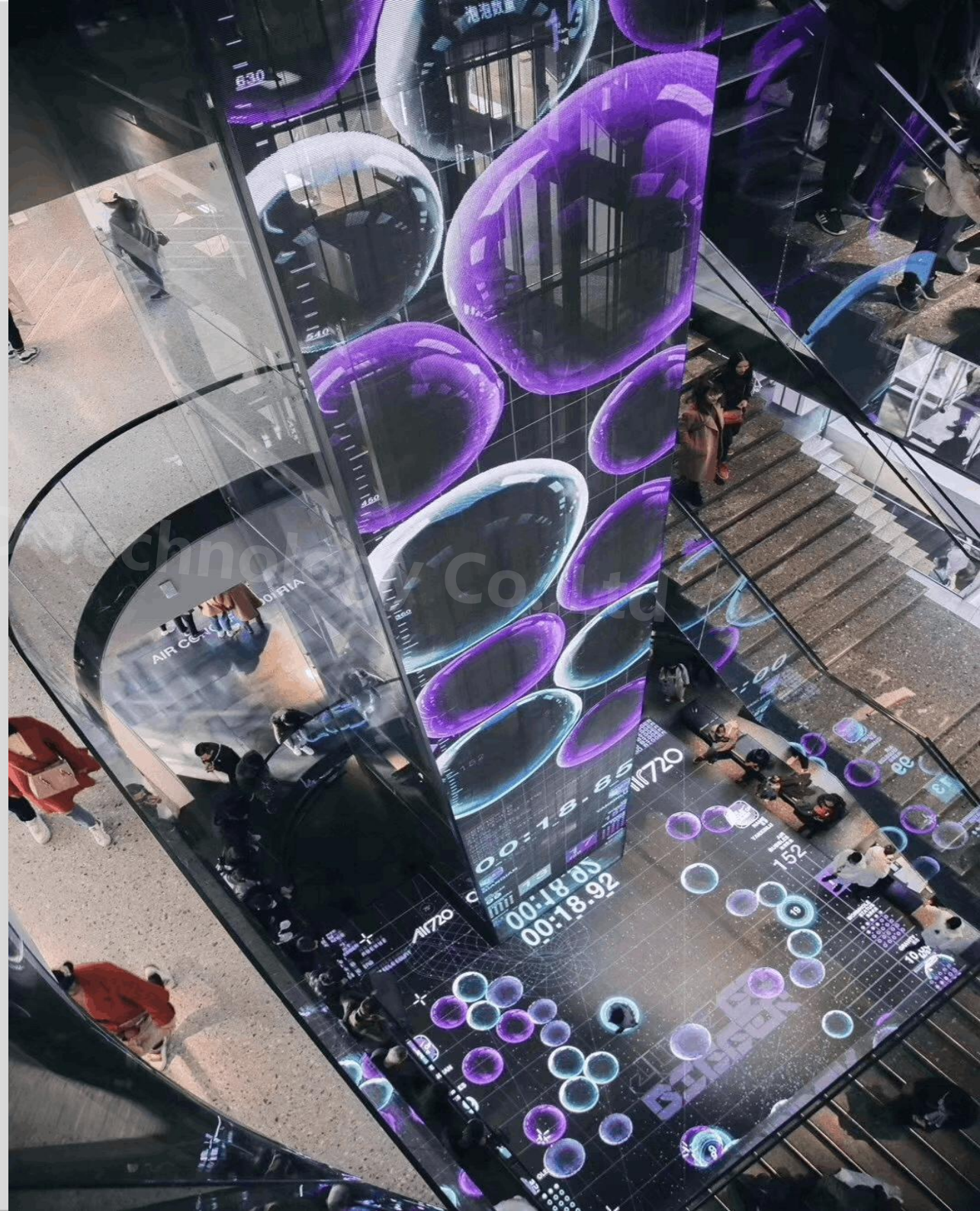


TP Series

Innovative Indoor Transparent LED Display

**RELEASE
YOUR
CREATIVITY**





Super Light

Only **9Kg/m²**

75%

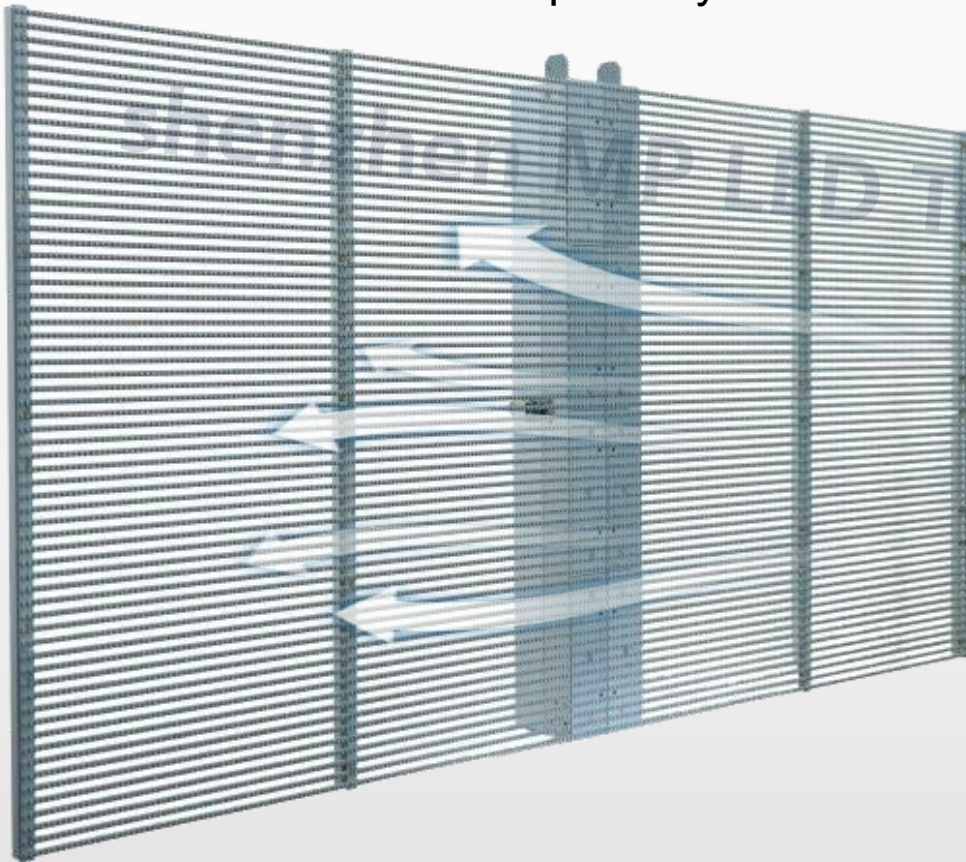
weight less than traditional led
display

Only **10kg/m²** for steel strcuture

80%

weight less than steel structure for
traditional led display

transparency



55%~90% transparency

Advantages:

- 1.Keep lighting for building inside
- 2.Keep wind through from transparent led display
- 3.Less weight



Now, let's check how much we can
save with it.....

1. Steel structure cost, **70% save**

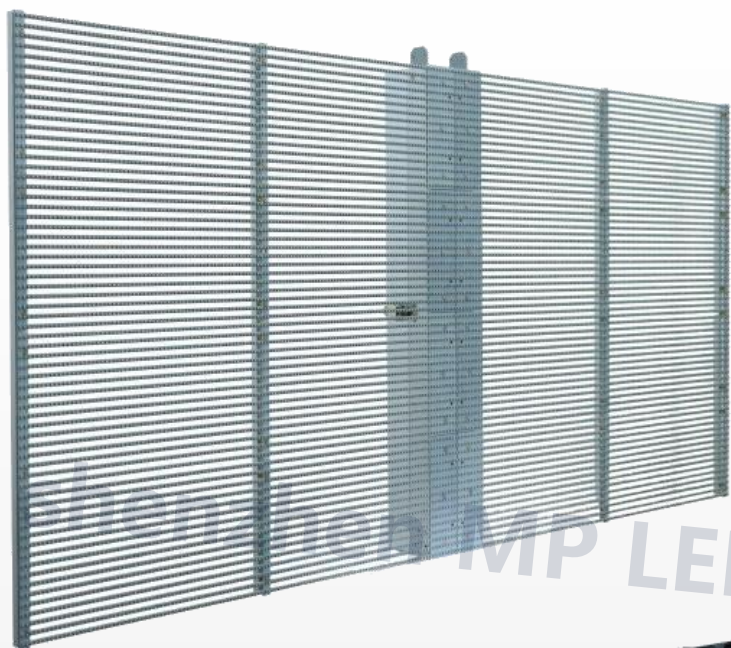
2. Labor cost, **80% save**

3. Shipment cost, **75% save**

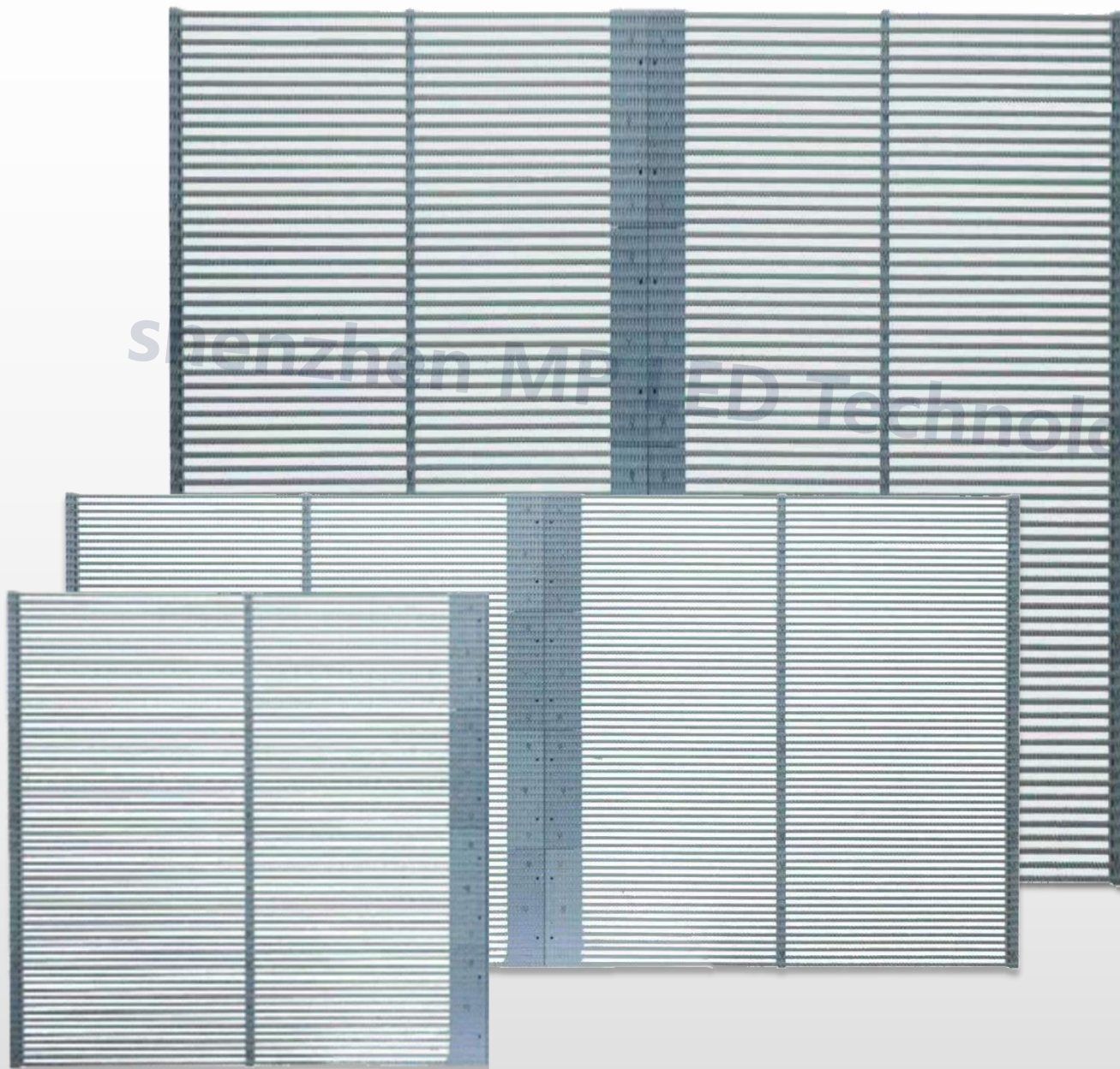
4. Maintenance and operation cost,
80% save

5. Electricity cost, **70% save**





Black color and white
color frame as option



Shenzhen MFLUO Technology Co., Ltd

Size customization available

This product unit panel size can well customize according to real window/site size/situation to make it 100% suit with buildings.



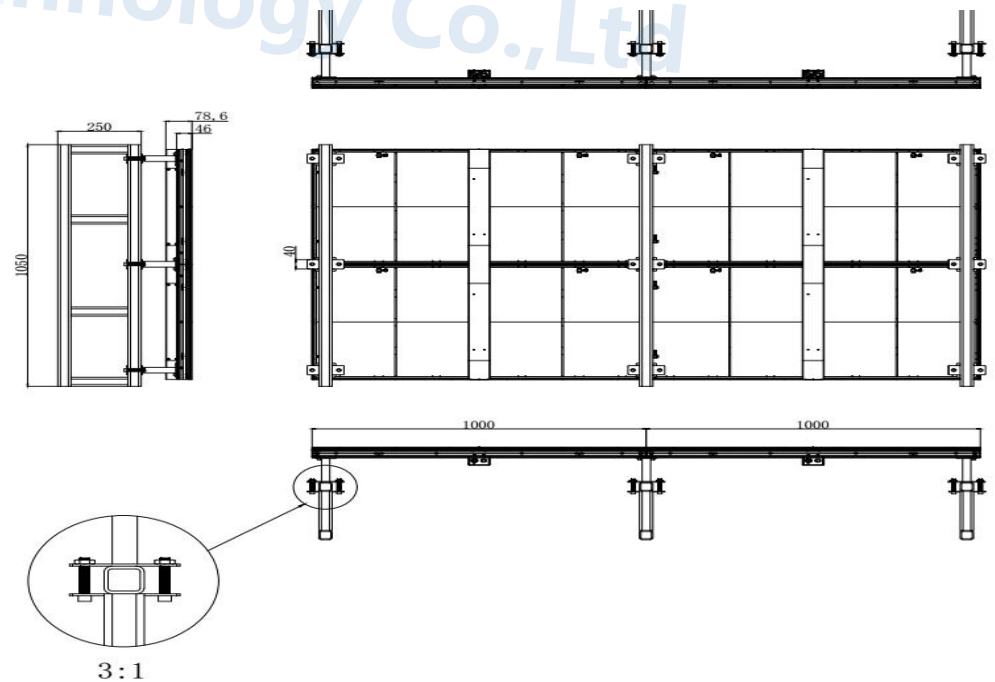
**Design customization
available**

This product can well accept for
customized irregular shape, like
led cube, led column, curved led,
etc.



Installation Method:stack

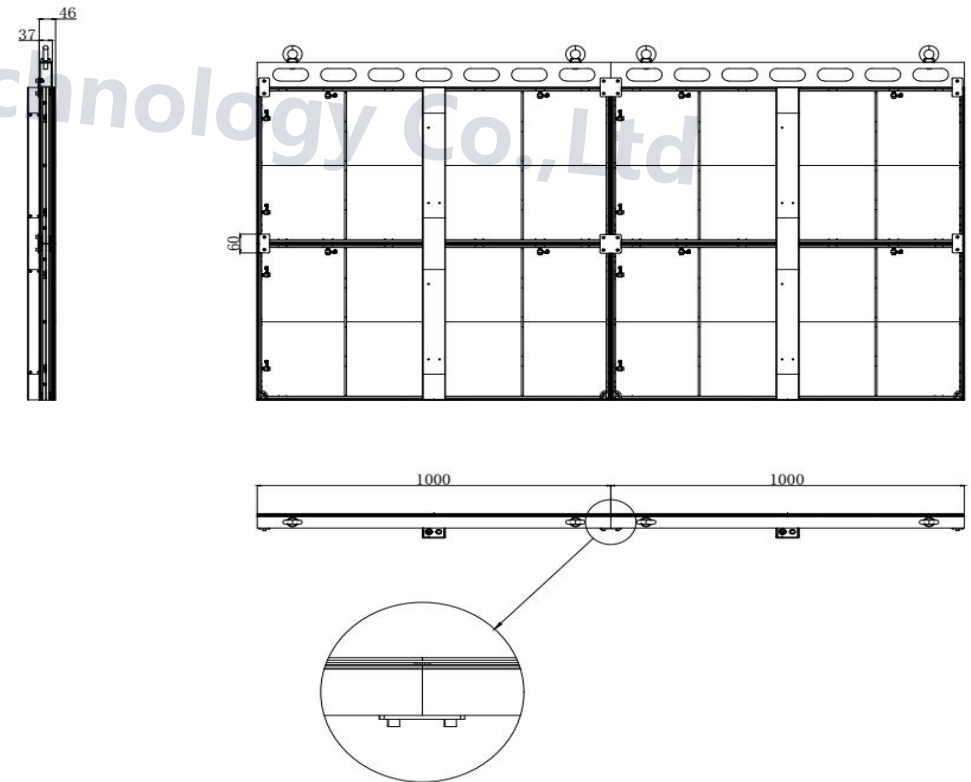
Application: store showcase, CBD building,
airport, station, shopping mall





Installation Method:Hanging

Application: stage, store, night bar, club, science museum

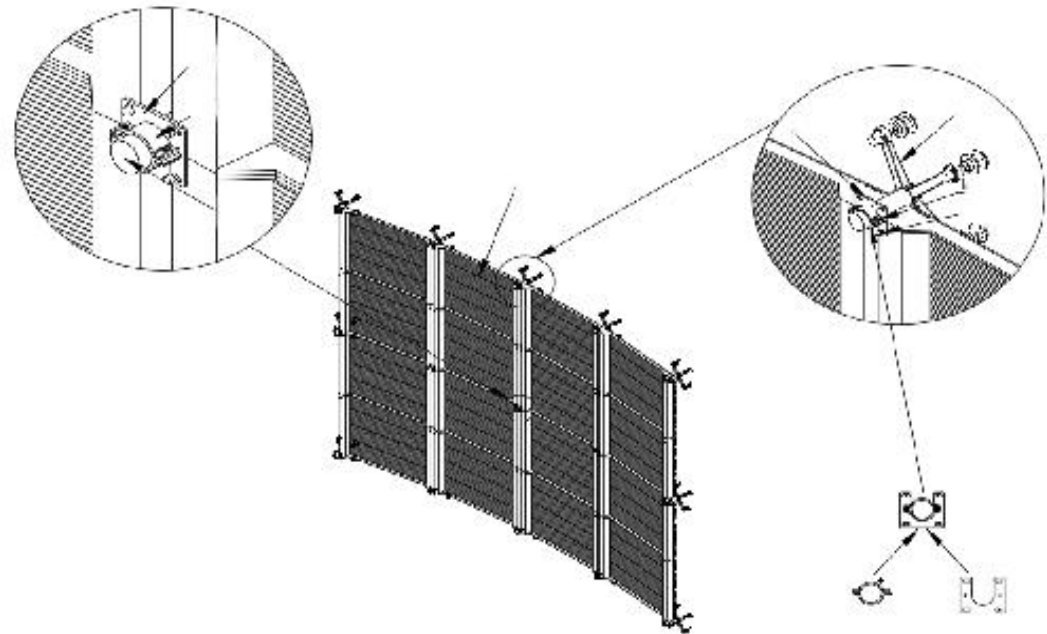




Installation Method: Glass Claw fixed

Application: elevator, building glass wall, airport station

Technology Co.,Ltd





1 cabinet screws

2 connecting plates screws

3 Side cabinet connecting plates

4 Vertical cabinet connecting plates

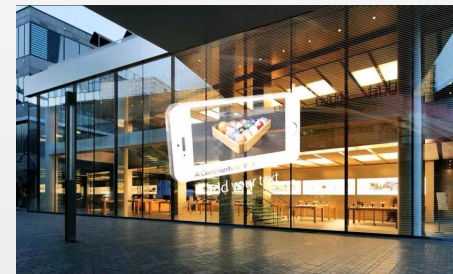
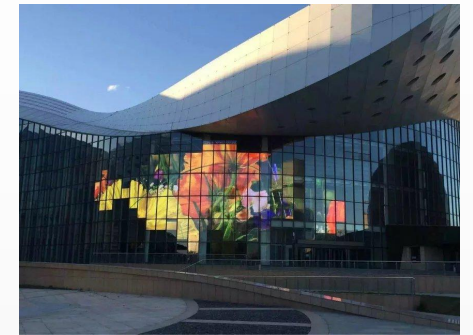
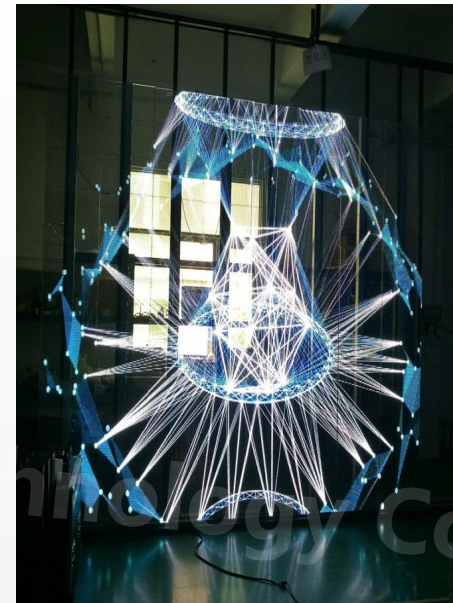
5 Hanging bar screws

6 Module mask screw

7 Ground bar

8 Cabinet power cable

9 Cabinet signal cable



Project & Application

Specification for transparent led display

Pixel pitch	3.91-7.82mm	2.84-5.62mm
Transparency	70%	65%
LED configuration	SMD1921 nation star	SMD1921 nation star
Pixel Density	32,768	61,952
Brightness	4000-5000cd/m2	4000-5000nits
Viewing angle	140°/ 140°	140°/ 140°
Scan mode	1/16	constant current
Refresh rate	1920-3840Hz	1920-3840Hz
Gray level	14 bits	14 bits
Module size	500mm x 125 x 20mm (W x H x D)	500mm x 125 x 20mm (W x H x D)
Panel size	1000mm x 500 x 75mm (W x H x D)	1000mm x 500 x 75mm (W x H x D)
Panel weight	5kg	5kg
Input voltage	AC100~240V 50/60 HZ	AC100~240V 50/60 HZ
Power consumption (Avg)	200W/sqm	220W/sqm
Power consumption (Max)	600W/sqm	800W/sqm
Working temperature	-20°C~60°C	-20°C~60°C
IP rating	IP31/IP31	IP31/IP31
Life span	100,000 hrs	100,000 hrs
Warranty	24 months	24 months